

## L4L19 SV1 Summary Sheet:

### Site Visit Title:

Natural Beauty, Designation, Mapping and Process

### Description:

An opportunity to hear from and ask questions to Natural England staff and nationally recognised experts on the designated landscape boundary variation projects. Including presentations and a visit to the only area in England currently subject to a boundary variation project.

Delegates visited the southern shore of the Stour Estuary in Essex to look at landscapes currently being considered for inclusion in the Suffolk Coast & Heaths AONB. Delegates had the opportunity to hear presentations from Natural England, local land managers and a landscape expert on the current process and how that process might look post Glover.

### Themes:

- Designated landscape boundary review process
- Features relating to designated landscapes
- Landscape Quality

### Outcomes and Outputs:

Output 1: Production of single page summary by the Leaders developed with delegates on what has been learnt.

Output 2: Delegates will have visited current boundary review process and current thinking of how process might look post Glover.

Outcome 1: Delegates will have increased understanding of designated landscape boundary variation process and important factors in future boundary variation projects.

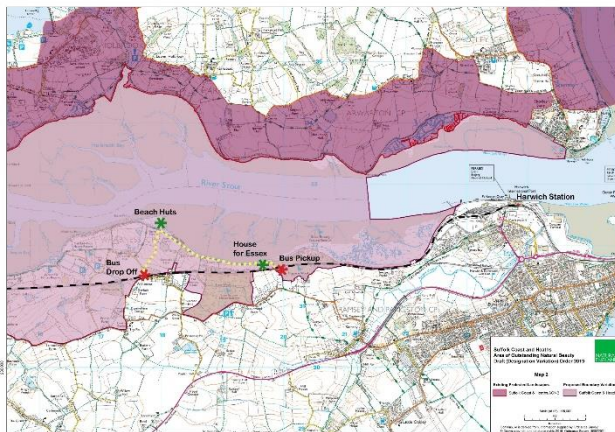
Outcome 2: Delegates will be in a stronger position to influence their own review process due to increased knowledge of the process.

### Lessons Learnt:

- No new boundary variation projects being taken on at this time (July 2019)
- Surrey Hills AONB have been promised to be next to have a review
- Natural England have produced comprehensive guidance on this subject (England Only): Guidance for assessing landscapes for designation as National Park or Area of Outstanding Natural Beauty in England (link to document below)
- Evaluation against the technical criteria of Natural Beauty includes:
  - Landscape quality; Scenic quality; Relative wildness; Relative tranquillity; natural heritage, Cultural heritage features; Cultural associations.
- **NB Not all criteria need to be in place for area to meet criteria**
- Boundaries need to be an easily distinguishable physical boundary

- In relation to settlements, they should:
  - Be excluded unless within a wider tract of qualifying land and contributing positively to natural beauty
  - Be assessed on character, qualities and relationship to adjoining countryside
  - Not be split
- Lessons learnt from Suffolk Coast & Heaths AONB work:
  - Understand special qualities
  - Weight of evidence
  - Transitional areas
  - Incongruous features
  - Fragmentation
  - Current Natural Beauty not future potential
  - Include features of interest on the margins
  - Settlements excluded
  - Defining boundaries across estuaries

**Photos:**



**Quotes:**

Very well organised, very inspiring & much too think about. (Steve Jack, Linc Wolds)

**Where to find more info:**

Guidance for assessing landscapes for designation as National Park or Area of Outstanding Natural Beauty in England at:

[https://consult.defra.gov.uk/natural-england/suffolk-coast-and-heaths-aonb/supporting\\_documents/Guidance%20for%20assessing%20landscapes%20for%20designation%20as%20National%20Park%20or%20AONB%20in%20England.pdf](https://consult.defra.gov.uk/natural-england/suffolk-coast-and-heaths-aonb/supporting_documents/Guidance%20for%20assessing%20landscapes%20for%20designation%20as%20National%20Park%20or%20AONB%20in%20England.pdf)

Simon Amstutz, AONB Manager, Dedham Vale and Suffolk Coast & Heaths AONBs  
[Simon.amstutz@suffolk.gov.uk](mailto:Simon.amstutz@suffolk.gov.uk)

David Vose, Senior Advisor, Natural England  
[david.vose@naturalengland.org.uk](mailto:david.vose@naturalengland.org.uk)

Rick Vonk, Site Manager, RSPB  
[rick.vonk@rspb.org.uk](mailto:rick.vonk@rspb.org.uk)